

Oster™

User Manual

ELECTRIC HOT WATER DISPENSER

MODEL BVSTWD7915 Series



IMPORTANT SAFEGUARDS

When using electrical appliances, basic safety precautions should always be followed to reduce the risk of fire, electric shock, and/or injury to persons, including the following:

1. *Read all instructions before using the machine.*
2. Do not touch hot surfaces. Use handles or knobs.
3. To protect against electric shock, *do not immerse this appliance including power base, in water or any other liquid.*
4. Close adult supervision is necessary when this appliance is used by or near children.
5. Unplug the power base from the power outlet when not in use, before repositioning and before cleaning. *Allow to cool before putting on or taking off parts, and before cleaning the appliance.*
6. Do not operate any appliance with a damaged cord or plug or after the appliance malfunctions, or has been damaged in any manner. Return this appliance only to the nearest authorized service center for examination, repair or adjustment.
7. The use of accessory attachments not recommended by the appliance manufacturer may result in fire, electric shock or injury to persons.
8. Do not use outdoors.
9. Do not let cord hang over edge of table or counter, or touch hot surfaces.
10. Do not place this appliance on or near a hot gas or electric burner or in a heated oven.
11. Ensure that the Hot Water Dispenser is properly located on the power base before plugging into the wall or switching on. To disconnect, turn all controls to "Off" then remove plug from wall outlet.
12. Remove the Hot Water Dispenser from power base before filling or pouring. Do not attempt to remove the Hot Water Dispenser from the power base until it is switched off, manually or automatically.
13. Use the Hot Water Dispenser only with the power base supplied and vice versa.
14. Do not use appliance for other than intended use.
15. Use on a hard, flat level surface only, to avoid interruption of air flow underneath the appliance.
16. *Extreme caution must be used when handling or moving Hot Water Dispenser and pouring from the Hot Water Dispenser containing boiling water.*
17. *Scalding may occur if the lid is removed during the heating cycle and if the cup is removed before dispensing is complete.*

SAVE THESE INSTRUCTIONS

SPECIAL CORD SET INSTRUCTIONS

1. A short power supply cord is provided to reduce the hazard resulting from becoming entangled in or tripping over a longer cord.
2. A grounding Type 3 - conductor extension cord may be purchased and used if care is exercised in its use.
3. If an extension cord is used the marked electrical rating of the extension cord must be at least 15 amps and 120 volts. The resulting extended cord must be arranged so that it will not drape over the counter top or table top where it can be pulled on by children or tripped over accidentally.
 - * This appliance has a grounded 3-prong electrical plug. It must be plugged only into a properly grounded 3-prong outlet. Do not modify the plug in any way.

PRECAUTIONS:

WARNING: TO AVOID SCALDING, handle this Hot Water Dispenser with care as water is heating, boiling, and cooling. The lid must remain in place during use to avoid steam burns. Keep spout away from persons as scalding can result from steam.

1. Place the electric Hot Water Dispenser well back from the edge of the counter.
2. This Hot Water Dispenser is intended for boiling WATER ONLY. Do not heat any other liquid or attempt to cook any food in this appliance.
3. NEVER place the Hot Water Dispenser NEAR HOT SURFACES.
4. Do not exceed the “Max” water level mark when filling. Overfilling could cause hot water to boil out of the spout.
5. Do not hold the switch on as this may damage the auto shut-off mechanism.
6. Carry or move electric Hot Water Dispenser by handle only.
7. Hot Water Dispenser body may get very hot, be careful when handling.
8. Do not immerse the Hot Water Dispenser or power base in water or any other liquid.
9. Before pressing the switch, ensure to always place a cup that is at least 300 ml capacity on the Removable Drip Tray with the Spout pointing directly to the cup.
10. Do not remove cup until dispensing is complete
11. Drip tray only holds under 300ml of water. Always ensure drip tray is emptied to avoid accidental overflow.

FOR HOUSEHOLD USE ONLY

INTRODUCTION

Table of Contents

	Page #
Important Safeguards	2
Special Cord Set Instructions	3
Precautions	3
Introduction	4
Diagram of Parts	4
Clean Your Electric Hot Water Dispenser Before First Use	5
Using Your Electric Hot Water Dispenser	5
If The Hot Water Dispenser Does Boil Dry	7
Care and Cleaning	7
Limited Warranty	8

Diagram of Parts

1. Power Indicator Light
2. On/Off switch
3. Hot Water Dispenser lid
4. Lid Release Button
5. Handle
6. Water Tank
7. Power base
8. Removable Drip Tray
9. Spout

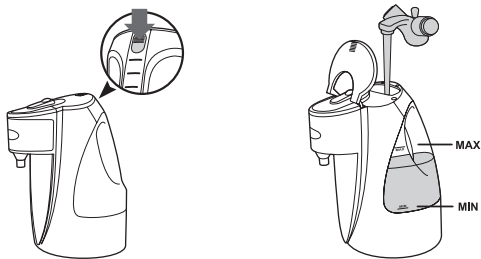


Clean your electric Hot Water Dispenser before first use

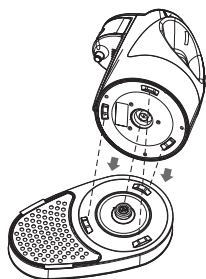
1. Wash the inside of the Hot Water Dispenser and lid with mild detergent and water. Rinse each thoroughly. Do not immerse the Hot Water Dispenser or power base in water or any other liquid. These items are not dishwasher safe.
2. Fill the water tank with fresh water to the “MAX” water level. Boil the water, following the directions below for use of your Hot Water Dispenser.
3. When the water and unit have cooled, discard the water. Rinse with cold water and repeat.
4. Your electric Hot Water Dispenser is now ready for use.

Using your Electric Hot Water Dispenser

1. Position the power base on a flat, heat resistant surface, as close as possible to a power outlet.
2. Follow cord routing in power base according to exit patterns. Proper cord routing will result in the power base laying flat when Hot Water Dispenser is placed on base. DO not operate Hot Water Dispenser if power base is not flat. If power base is not flat, remove Hot Water Dispenser from power base and repeat cord placement instructions.
3. To fill with water, open the lid by pressing the lid release button. Fill the water tank with water to below the “MAX” water level mark. Ensure the lid is firmly closed in place before plugging the Hot Water Dispenser into the electric outlet. **NOTE:** Do not exceed the “MAX” water level mark indicated on the electric Hot Water Dispenser. The water level must be within the “MAX” and “MIN” level as too little water will not allow the Hot Water Dispenser to dispense water into the container, instead the boil dry safety shut-off feature will activate.

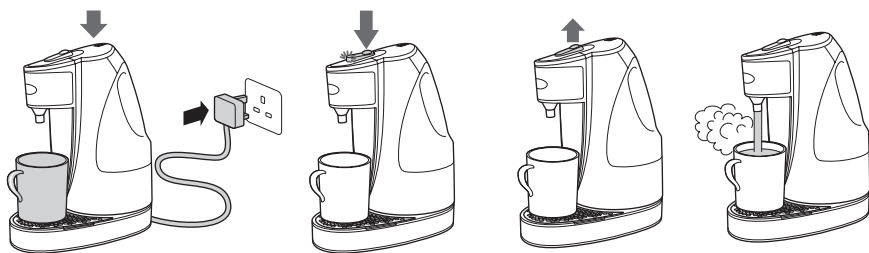


- The notches at the base of the unit and the beveled stubs on the power base must be properly positioned with the spout over the drip tray for the Hot Water Dispenser to operate.



- Place a cup on the removable drip tray and position it to ensure the spout is pointing to the cup.

NOTE: It is recommended to choose a cup no less than 300ml capacity.



- Plug the electric cord into an electric outlet. Turn the switch ON. The indicator light will illuminate to indicate the unit is on. The water will heat and the electric Hot Water Dispenser will switch off automatically when the water boils and hot water will flow out from the spout.

NOTE: Ensure the ON/OFF switch is clear of obstructions and the lid is firmly closed. The electric Hot Water Dispenser will not turn off automatically if the ON/OFF switch is constrained, or if the lid is left open.

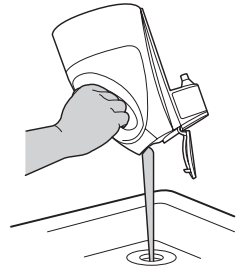
- Do not remove the cup until dispensing is complete.
- The Hot Water Dispenser will not re-boil until the on/off switch is again switched ON. Wait 25 seconds, allowing Hot Water Dispenser to cool down, then switch ON.

IF THE HOT WATER DISPENSER DOES BOIL DRY

If the Hot Water Dispenser is operated in accordance with instructions for use, it is unlikely that the Hot Water Dispenser will boil dry. However, in the event that the Hot Water Dispenser does boil dry, it is protected by a boil dry, fail-safe device which will switch the Hot Water Dispenser off automatically on sensing a boil dry situation and keep it switched off until the Hot Water Dispenser is refilled with at least the minimum amount of water. **Always allow the Hot Water Dispenser to cool for half an hour before reuse if the Hot Water Dispenser has boiled dry.**

Care and cleaning of your electric Hot Water Dispenser

1. Mineral deposits in tap water may cause scale deposits to form inside the electric Hot Water Dispenser after frequent use. To remove this scale build-up, fill the water tank with a solution of 3 cups of white vinegar and 3 cups water. Let sit overnight.
2. Empty the vinegar solution from the electric Hot Water Dispenser by removing the Hot Water Dispenser from the power base and bring the Hot Water Dispenser to the sink. Tip the Hot Water Dispenser upside down to pour out the vinegar solution. Then turn it right side up and allow any solution to drain out of the spout. Remove any stain remaining inside by rubbing with a damp cloth.
3. Fill the water tank with clean water. Place Hot Water Dispenser on power base and place a cup on the removable drip tray under the spout and then press the switch ON to boil water, then discard water. Repeat and the electric Hot Water Dispenser will be ready to use.
4. The electric Hot Water Dispenser will not operate again until the on/off switch is pressed downward.
5. Always remove Hot Water Dispenser from power base and disconnect power base from electrical outlet before cleaning. Do not immerse Hot Water Dispenser or power base in water or other liquid.
6. The outside of the electric Hot Water Dispenser can be wiped with a soft damp cloth.



NOTE: *Never use any chemical, steel wool, or abrasive cleaners to clean any part of the Hot Water Dispenser, including the power base.*

Oster^{MC}

Pour toutes questions en ce qui concerne ce produit,
veuillez entrer en rapport avec le service à la clientèle de Jarden Consumer Solutions

États-Unis : 1 800.334.0759

Canada : 1 800 667.8623

www.oster.ca

© 2013 Sunbeam Products, Inc. faisant affaire sous le nom de
Jarden Consumer Solutions. Tous droits réservés.

Aux États-Unis, distribué par Sunbeam Products, Inc.,
faisant affaire sous le nom de Jarden Consumer Solutions, Boca Raton, FL 33431.
Au Canada, importé et distribué par Sunbeam Corporation (Canada) Limited,
faisant affaire sous le nom de Jarden Consumer Solutions,
20B Hereford St., Brampton (Ontario) L6Y 0M1.

Imprimé en Chine

1-Year Limited Warranty

Sunbeam Products, Inc. doing business as Jarden Consumer Solutions or if in Canada, Sunbeam Corporation (Canada) Limited doing business as Jarden Consumer Solutions (collectively “JCS”) warrants that for a period of one year from the date of purchase, this product will be free from defects in material and workmanship. JCS, at its option, will repair or replace this product or any component of the product found to be defective during the warranty period. Replacement will be made with a new or remanufactured product or component. If the product is no longer available, replacement may be made with a similar product of equal or greater value. This is your exclusive warranty. Do NOT attempt to repair or adjust any electrical or mechanical functions on this product. Doing so will void this warranty.

This warranty is valid for the original retail purchaser from the date of initial retail purchase and is not transferable. Keep the original sales receipt. Proof of purchase is required to obtain warranty performance. JCS dealers, service centers, or retail stores selling JCS products do not have the right to alter, modify or any way change the terms and conditions of this warranty.

This warranty does not cover normal wear of parts or damage resulting from any of the following: negligent use or misuse of the product, use on improper voltage or current, use contrary to the operating instructions, disassembly, repair or alteration by anyone other than JCS or an authorized JCS service center. Further, the warranty does not cover: Acts of God, such as fire, flood, hurricanes and tornadoes.

What are the limits on JCS’s Liability?

JCS shall not be liable for any incidental or consequential damages caused by the breach of any express, implied or statutory warranty or condition.

Except to the extent prohibited by applicable law, any implied warranty or condition of merchantability or fitness for a particular purpose is limited in duration to the duration of the above warranty.

JCS disclaims all other warranties, conditions or representations, express, implied, statutory or otherwise.

JCS shall not be liable for any damages of any kind resulting from the purchase, use or misuse of, or inability to use the product including incidental, special, consequential or similar damages or loss of profits, or for any breach of contract, fundamental or otherwise, or for any claim brought against purchaser by any other party.

Some provinces, states or jurisdictions do not allow the exclusion or limitation of incidental or consequential damages or limitations on how long an implied warranty lasts, so the above limitations or exclusion may not apply to you.

This warranty gives you specific legal rights, and you may also have other rights that vary from province to province, state to state or jurisdiction to jurisdiction.

How To Obtain Warranty Service

In the U.S.A.

If you have any question regarding this warranty or would like to obtain warranty service, please call 1 800-334-0759 and a convenient service center address will be provided to you.

In Canada

If you have any question regarding this warranty or would like to obtain warranty service, please call 1 800-667-8623 and a convenient service center address will be provided to you.

In the U.S.A., this warranty is offered by Sunbeam Products, Inc. doing business as Jarden Consumer Solutions located in Boca Raton, Florida 33431. In Canada, this warranty is offered by Sunbeam Corporation (Canada) Limited doing business as Jarden Consumer Solutions, located at 20B Hereford Street, Brampton, Ontario L6Y 0M1. If you have any other problem or claim in connection with this product, please write to Consumer Service Department.

PLEASE DO NOT RETURN THIS PRODUCT TO ANY OF THESE ADDRESSES OR TO THE PLACE OF PURCHASE.