

Oster®



MODEL

BLSTMG-W00-074

INSTRUCTION MANUAL

8 SPEED BLENDER

PLEASE READ ALL INSTRUCTIONS BEFORE USING THIS APPLIANCE

IMPORTANT SAFEGUARDS

When using electrical appliances, basic safety precautions should be followed, including the following:

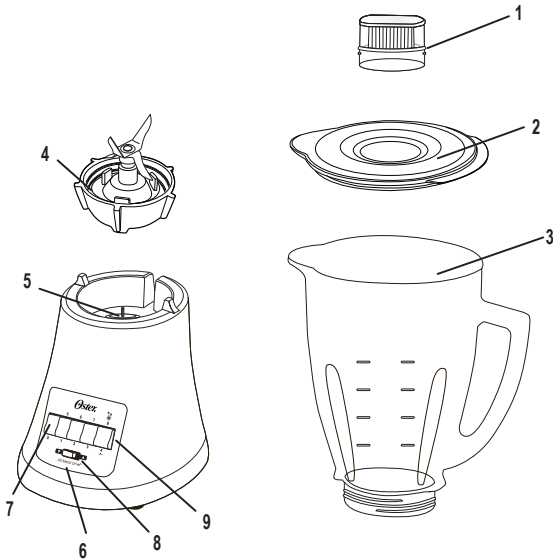
- **READ ALL INSTRUCTIONS BEFORE USE.**
- Unplug cord from outlet when not in use or before cleaning.
- To protect against risk of electrical shock, **DO NOT** immerse the cord, plug or motor base in water or any other liquids.
- **DO NOT** let cord hang over edge of table or counter or touch hot surfaces.
- Never leave appliance unattended when in use.
- Avoid contact with moving parts. Keep hands and utensils out of jar while blending to prevent personal injury or damage to the Blender. A rubber spatula may be used only when the blender is not running.
- The Blade is sharp. Handle with care.
- Always put the Lid on the Jar before operating the Blender, and rest hand on the jar lid when starting and running motor.
- **DO NOT** operate any appliance with a damaged cord or plug or after the appliance malfunctions or is dropped or damaged in any manner. Take the appliance to the nearest Authorized OSTER® Service Center for examination, repair or electrical or mechanical adjustment.
- **DO NOT** use outdoors or for commercial purposes; this appliance is intended for household use only
- Use this appliance for its intended use as described in this manual. **DO NOT** use attachments that are not recommended by the manufacturer; they may cause injury.
- Always operate on a flat surface.
- Unplug the Blender when it is not in use, before taking off or putting on parts and before cleaning.
- The use of attachments not made by the manufacturer including canning or ordinary jar and processing assembly parts is not recommended, and may cause injury to persons.
- This product is for household use only.
- The maximum rating marked on the product is based on the attachment that draws the greatest load. Other attachments may draw less power.
- **DO NOT** operate blender continuously for more than 3 minutes.
- This appliance is not intended for use by persons (including children) with reduced physical, sensory or mental capabilities, or lack of experience and knowledge, unless they have been given supervision or instruction concerning use of the appliance by a person responsible for their safety. Children should be supervised to ensure that they **DO NOT** play with the appliance.
- Close supervision is necessary when any appliance is used by or near children, or incapacitated individuals.
- Do not put very cold liquids or ice into a blender jar that has come directly after making a hot recipe.
- This product is not intended for blending hot liquids. Do NOT add ingredients with over 60°C .
- If the supply cord is damage it must be replaced by the manufacturer or its service agent.

THIS PRODUCT IS FOR HOUSEHOLD USE ONLY.

The maximum rating marked on the product is based on the attachment that draws the greatest load. Other attachments may draw less power.

SAVE THESE INSTRUCTIONS

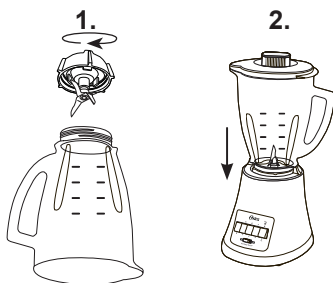
DESCRIPTION OF THE APPLIANCE



1. Feeder Cap for adding ingredients while blending
2. Leakproof Lid
3. 5-Cup (1.25L) Max. Dishwasher Safe/ Scratch Resistant Glass Jar
4. Threaded Bottom Cap with Ice Crush Blade pulverizes ice for smooth frozen drinks
5. Powerful Motor with exclusive ALL-METAL DRIVE® system for extra durability
6. Control Panel
7. Off button
8. Low & High speed switch
9. 8 Speed buttons (including Pulse)

INSTRUCTION FOR USE

ASSEMBLING YOUR BLENDER



1. Turn Jar upside down so the small opening is at the top. Place Threaded Bottom Cap on Jar and turn it clockwise to tighten.
2. Place Jar assembly onto base.

SELECTING THE SPEED


Slide switch to ▲ High or ▼ Low. Push desired speed and blend ingredients to desired consistency.

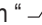
IMPORTANT: Do not operate blender continuously for more than 3 minutes.

Push off button “O” to stop the Blender and turn Blender off.

USING THE PULSE FUNCTION “ ”

To use pulse, select the low ▼ setting on the switch.



Push the Pulse Button “  ” (speed 4) and hold down for desired length of time.

Release the Pulse button “  ” and allow Blade to stop. Repeat cycle as desired.

TIP: Refer to the “Guide For Processing Foods in Blender” located on page 5 for information on processing foods.

USING THE ICE CRUSH FUNCTION “ ”

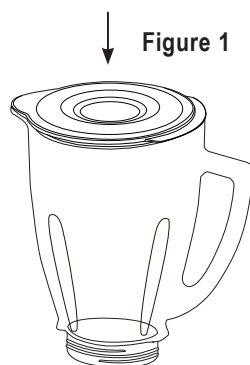
To use Ice Crush, select the high ▲ setting on the switch.

Push the Ice Crush Button “  ” (speed 8) and hold down for desired length of time. Release the Ice Crush Button “  ” and allow Blade to stop.

Repeat cycle as desired.

BLENDING TIPS

- Put liquids in the Jar first, unless a recipe says otherwise.
- Crushing ice: Crush 6 ice cubes or approximately 2 cups of ice at a time.
- This Blender has been designed to gently process foods when operating at low speeds. If blades do not rotate during operation, simply choose a higher speed.
- Do not remove the Lid while in use. Remove Feeder Cap to add smaller ingredients. (Figure 1)
- Cut all firm fruits and vegetables, cooked meats, fish and seafood into pieces no larger than 1.8 cm (1/2 inch) to 2.5 cm (1 inch). Cut all kinds of cheeses into pieces no larger than 1.8 cm (1/2 inch).
- This Blender will not mash potatoes, whip egg whites or substitute dairy toppings, mix stiff dough or grind raw meat.



GUIDE FOR PROCESSING FOODS IN BLENDER

Food	PROCESSED QUANTITY	UNPROCESSED QUANTITY	SPECIAL INSTRUCTIONS
Breadcrumbs	125 ml (1/2-cup)	1 slice, torn in 8 pieces	Pulse 1 – 4 times
Celery	200 ml (3/4-cup)	250 ml (1-cup) of 2.5 cm (1-inch) pieces	Pulse 2 – 3 times
Cheese, Cheddar	250 ml (1-cup)	250 ml (1-cup) of 2.5 cm (1-inch) pieces	Pulse 2 times
Cheese, Swiss	250 ml (1-cup)	250 ml (1-cup) of 2.5 cm (1-inch) pieces	Pulse 5 times
Cheese, Hard or Semi-Hard	250 ml (1-cup)	250 ml (1-cup) of 2.5 cm (1-inch) pieces	Chop continuously
Coffee Beans	250 ml (1-cup)	250 ml (1-cup)	Grind 45 seconds for percolators and 60 seconds for drip
Cookies, Wafer	125 ml (1/2-cup)	10 wafers	Pulse 3 times
Crackers, Graham	125 ml (1/2-cup)	8 crackers	Pulse 3 times
Peppers	150 ml (2/3-cup)	250 ml (1-cup)	Pulse 1 time
Meat, Boneless, Cooked	250 ml (1-cup)	250 ml (1-cup) of 2.5 cm (1-inch) pieces	Chop continuously
Nuts, almonds, peanuts, pecans, walnuts	250 ml (1-cup)	250 ml (1-cup)	Pulse 2 – 4 times

CARING FOR YOUR BLENDER AFTER USE

IMPORTANT: UNPLUG BEFORE CLEANING BASE and DO NOT IMMERSE THE BLENDER BASE IN WATER OR ANY OTHER LIQUIDS. Use a damp, soft sponge with mild detergent to clean the outside of the Blender base. All parts except for the Blender base are dishwasher safe. Threaded Bottom Cap are top rack dishwasher safe ONLY. You can also wash the parts in warm, soapy water. Rinse well and dry.



STORING YOUR BLENDER

After cleaning, reassemble Bottom Cap to Jar with Blade.
Store Blender with Cover ajar to prevent container odor.

SPEED CHART

In the table below you will find a typical application for each speed to better guide you when using your Blender.

8 SPEED

SPEED RANGE SELECTION	▼ LOW				▲ HIGH			
SPEED	1	2	3		5		7	
FUNCTION	puree	chop	mix	pulse	liquefy	milkshake	smoothie	ice crush

1 YEAR LIMITED WARRANTY

Warranty service is available for a period of one year from date of purchase subject to following exceptions:

- Consumable parts such as carbon brush, rubber coupling, metal drive shaft, stainless steel blade and bottom cap.
- Damage due to improper use, alternation, abuse, accident or installation or operation not in accordance with local electrical codes.
- Damage resulting from operation other than normal food preparation.
- Units bought more than one year from date of purchase.

For service, please contact any of the following Oster service centers at your convenience:

<p>Coleman Store Galleria <i>Lower Level 1, East Lane Robinson's Galleria Pasig City, National Capital Region Tel. No.: 63 2 6329145</i></p>	<p>YSU Marketing Mortola Street Cogon Cagayan de Oro City, Misamis Oriental Tel. No.: 63 88 8572875</p>
<p>Coleman Store Makati <i>3rd Floor, Glorietta 2, Ayala Center Makati City, National Capital Region</i></p>	<p>FilTrend Marketing Corporation <i>Platinum 21, 34 Barcelona Street Zamboanga City, Zamboanga Tel. No.: 63 62 9912514</i></p>
<p>Coleman Store Alabang <i>2nd Level, Expansion Mall Alabang Town Center Muntinlupa City, National Capital Region Tel. No.: 63 2 8507854</i></p>	<p>JLS Service <i>430 Maharlika St. Carangalan, Tibing Road, Dagupan City Tel. No.: 63 75 5227508</i></p>
<p>Caro & Marie <i>18 Cherry Court Bldg. General Maxilom Avenue Cebu City, Cebu Tel. No.: 63 32 2334525 / 2334553</i></p>	<p>Delta Electronics <i>8-12 Jennifer Bldg. Bonifacio St. Ba- guio City Tel. No.: 63 74 4450774</i></p>
<p>Roger's Trading <i>Tabuc Suba, Jaro Iloilo City, Iloilo Tel. No.: 63 33 3207110 / 3295936</i></p>	<p>ETR Electronics <i>La Perla Insurance Bldg. Rosario corner Mabini St. Bacolod City Tel. No.: 63 34 7071604</i></p>
<p>Doreen's Chef Corner <i>Rizal corner Carlos Tan Streets Ormoc City, Leyte Tel. No.: 63 53 5610475</i></p>	<p>Alex Aire <i>Tahao Road Legaspi City, Albay Tel. No.: 63 52 8410143</i></p>
<p>Mega Haus Trade center <i>R. Magsaysay Avenue corner Narra Street Davao City, Davao Tel. No.: 63 82 2211833 / 3058208</i></p>	<p>JNGJ Enterprises <i>Gopiao Bldg., Dolores, San Fernando, Pampanga Tel. No.: 63 45 9617404</i></p>



Visit our website for more product information:

www.oster.com

© 2013 Sunbeam Products, Inc. doing business as Jarden Consumer Solutions.
All rights reserved. Distributed by Holmes Products (Far East) Ltd. doing business as Jarden
Consumer Solutions, 40/F Manhattan Place, 23 Wang Tai Road, Kowloon Bay, Hong Kong.
One Year Limited Warranty – see inside for details. Sunbeam Products, Inc. and Holmes
Products (Far East) Ltd. are subsidiaries of Jarden Corporation (NYSE: JAH).